

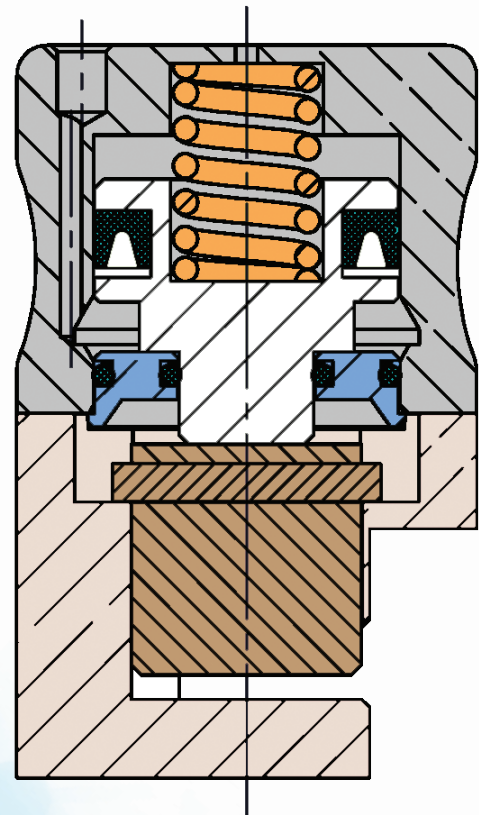
NPP SERIES PINCH VALVES

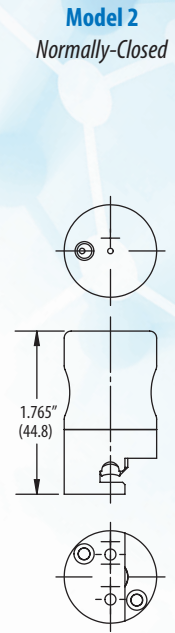
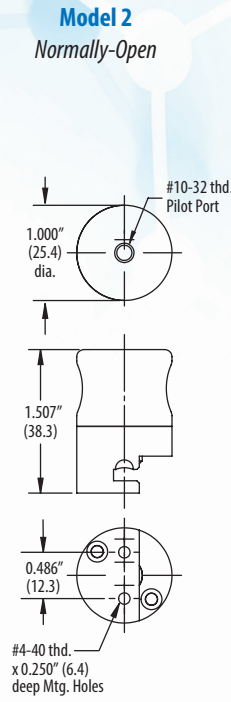
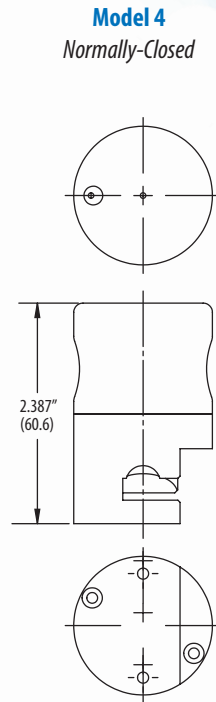
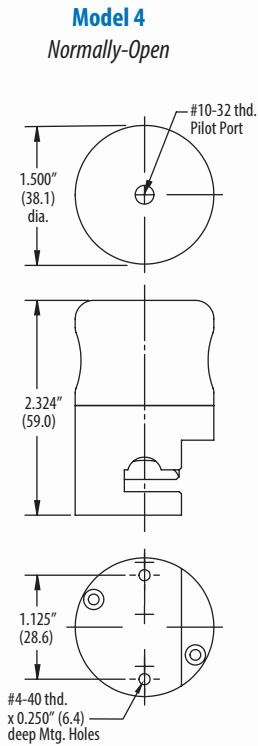


Function	2-way normally-open or normally-closed
Material, Body	Aluminum, ENP
Material, Wetted	Polyurethane tubing (<i>no wetted areas in valve</i>)
Max. Pilot Pressure	250 psig (17 bar)
Medium	Air, water, gas, or compatible fluids
Mount	#4-40 manifold (<i>M3 available</i>)
Operating Temp. Range	32 to 230°F (0 to 110°C)
Tubing, Length	Comes with 12" (30 cm) of selected tubing
Voltage	n/a (<i>air piloted</i>)
Wattage	n/a (<i>air piloted</i>)
More Details	clippard.com/link/npp-series

Clippard's NPP series pinch valves utilize an air-piloted design to provide the same functionality and benefits as the NPV series but with the added benefit of lower power and greater force. This makes them ideal for applications that are particularly sensitive to heat or those that require larger or firmer tubes.

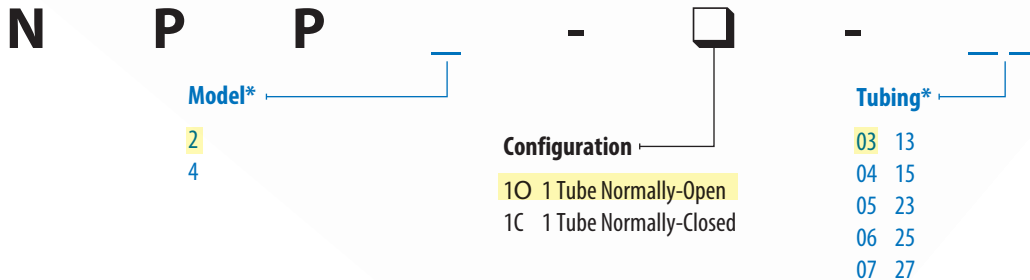
- Unobstructed flow path
- Each valve comes with 12" (30 cm) of silicone tubing pre-installed
- Tubing is easily replaceable
- Low power consumption
- High cycle life
- Large variety of tubing sizes available
- Ideal for applications that are sensitive to heat
- A great choice for closing larger and/or firmer tubes





Dimensions shown are in inches (millimeters listed in parentheses). Visit clippard.com for more detailed 2D and 3D drawings.

ORDERING INFORMATION



*Use the chart below to identify the appropriate **Model** and **Tubing** based on the desired specifications.

Tubing Type	Max. Pressure	Tubing I.D.	Tubing O.D.	Tubing Wall	Min. to Open	Min. to Close	Model	Tubing
Medical/Laboratory Grade Silicone Tubing	30 psig (2 bar)	1/16" (1.6 mm)	1/8" (3.8 mm)	1/32" (0.8 mm)	15 psig (1 bar)	30 psig (2 bar)	2	03
	30 psig (2 bar)	1/16" (1.6 mm)	3/16" (4.8 mm)	1/16" (1.6 mm)	40 psig (2.8 bar)	30 psig (2 bar)	2	04
	20 psig (1.4 bar)	1/8" (3.8 mm)	1/4" (6.4 mm)	1/16" (1.6 mm)	10 psig (0.7 bar)	20 psig (1.4 bar)	4	05
	20 psig (1.4 bar)	3/16" (4.8 mm)	5/16" (7.9 mm)	1/16" (1.6 mm)	10 psig (0.7 bar)	20 psig (1.4 bar)	4	06
Polyurethane Tubing	20 psig (1.4 bar)	1/4" (6.4 mm)	3/8" (9.5 mm)	1/16" (1.6 mm)	10 psig (0.7 bar)	20 psig (1.4 bar)	4	07
	105 psig (7.2 bar)	1/16" (1.6 mm)	1/8" (3.8 mm)	1/32" (0.8 mm)	50 psig (3.4 bar)	65 psig (4.5 bar)	2	13
Sanitary Food Grade Silicone Tubing	105 psig (7.2 bar)	1/8" (3.8 mm)	1/4" (6.4 mm)	1/16" (1.6 mm)	45 psig (3 bar)	65 psig (4.5 bar)	4	15
	14 psig (1 bar)	1/16" (1.6 mm)	1/8" (3.8 mm)	1/32" (0.8 mm)	15 psig (1 bar)	30 psig (2 bar)	2	23
	14 psig (1 bar)	1/8" (3.8 mm)	1/4" (6.4 mm)	1/16" (1.6 mm)	10 psig (0.7 bar)	20 psig (1.4 bar)	4	25
	9 psig (0.6 bar)	1/4" (6.4 mm)	3/8" (9.5 mm)	1/16" (1.6 mm)	10 psig (0.7 bar)	20 psig (1.4 bar)	4	27

Example Part Number:

NPP2-1O-03

For more info, scan the QR code or visit

clippard.com/link/npp-series

